

Testimony of Joyce Techel

Regarding the Proposed Calaveras County General Plan and DEIR

July 31, 2018

- 1) My Name is Joyce Techel
- 2) I live at 2216 Evans Road. I have lived in Calaveras County since 1974.
- 3) I am Owner/Operator of Jay Tee Kennels and I am a member of MyValleySprings.com and CPC.
- 4) I am concerned about the proposed general plan and the FEIR and how impacts on traffic, roads and safety will, or won't, be addressed.

According to Draft 2017 Regional Transportation Plan (RTP), the CCOG expects to fund the first \$337 million in road projects, but not the other \$363 million in projects. (Draft 2017 RTP, p.68.) The numbers get worse when you look at local capital improvement projects needed to serve additional growth. The CCOG expects to fund only the first \$35 million of local capital projects, and not the last \$196 million of such projects. In addition, the Draft Calaveras County General Plan's Circulation Element keeps roadway level of service standards in place, and only allows very limited exceptions. (Draft Circulation Element, Policy 2.2) Thus, it is reasonable to conclude that these severe limits to transportation infrastructure funding will also limit local development and population growth. We strongly encourage the Draft Calaveras County General Plan to prominently include this information in the information in the introductory section in the circulation element.

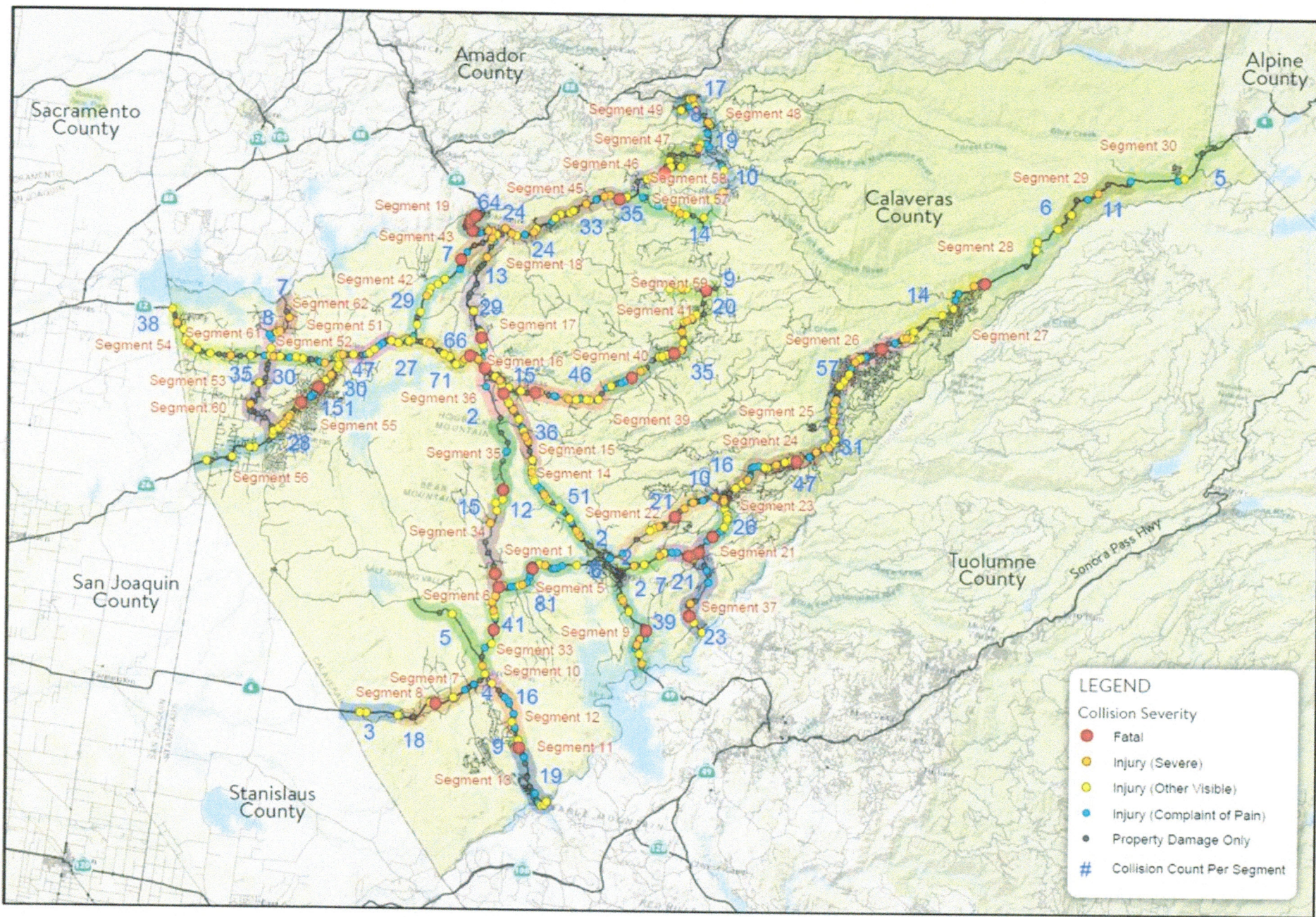
Existing County roads, with no shoulders or drainage, are very unforgiving. Attached is a map of the accidents on Calaveras roads from 2011 to 2016. **A total of 1,537 accidents are noted ranging from fatalities, severe injury, visible injury, injury with complaint of pain, to property damage only.**

Accident rates are a measure of the level of safety on county roads. We can no longer accept the failure to fund our roads.

We don't want to pave the Sierras, but we do need safe roads for residents, tourists, commercial pursuits, pedestrians, and alternative travelers, and also, hopefully, be able to avoid becoming Sonora!

Safer Tri-County Roads Map covers 2011 to 2016

http://www.safertricountyroads.com/uploads/8/7/7/8/87781356/calaveras_orig.jpg



Calaveras County Collisions

Marti Crane, Valley Springs

I cannot list all the necessary details and resources, so I'm submitting my statement for the official record.

Policies that do not commit to reduce impacts are not mitigation measures.

CEQA requires that mitigation measures be enforceable commitments to reduce or avoid significant environmental impacts.

The County proposes as mitigation measures, a number of policies and programs that do not commit the County to reduce or avoid significant environmental impacts.

The following such policies and programs *do not* qualify as mitigation measures.

Policy COS 4.10

Should proposed developments within the County be anticipated to result in potential impacts related to the emission of criteria air pollutants, the County shall consider imposing mitigation measures

Policy COS 4.14

The County shall investigate the potential use of woody biomass generated through forest thinning and defensible space clearing, for the generation of renewable energy.

IM COS-4I

At the County's discretion, for development that is subject to a discretionary entitlement and subject to CEQA review, the County shall require project applicants to enlist the services of a *qualified* biologist to evaluate and determine mitigation measuresAt the County's discretion!

IM COS-4J

At the County's discretion, development that is subject to a discretionary entitlement and subject to CEQA review shall be required to evaluate potential impacts ...At the county's discretion!

Policy COS 3.9

Encourage development to be compatible with wildlife movement.

IM COS-4L

The County shall work with applicants to encourage preservation or enhancement of upland habitat for wildlife species on parcels containing suitable habitat.

- Habitat preservation and enhancement shall be encouraged...
- The County shall work with applicants to encourage development to be compatible with wildlife movement...
- Mitigation measures may include ...
- Creek corridors should be preserved...

IM PF-1D

The County shall consider the environmental benefits of facilitating joint use and facility co-location when evaluating the expansion of public service facilities....shall consider???

Many implementation measures in the plan identify mitigation tasks, but provide no time frame for the task to be accomplished.

Since the County can defer these measures indefinitely, they are not enforceable and **do not qualify as mitigation measures.**

The people of Calaveras County deserve straight talk.

The County needs to say yes when it means yes, and no when it means no.

People deserve to know when the County will protect the environment, and when they will not.

Only then can people take the appropriate action on Election Day.

When you continue to call these 'mitigation measures', and work to push them through,

I have to wonder who you're representing with this document.

It's clearly not the people of Calaveras who have chosen to live here for the promised quality of life experiences and opportunities.

Testimony on the General Plan Draft EIR, 7-31-18

Tom Infusino, Calaveras Planning Coalition.

The DEIR is flawed in many ways. The CPC will provide more detailed comments on the DEIR in writing by the August 13 deadline.

According to the DEIR, the plan will have 25 significant and unavoidable impacts on traffic, fire safety, water delivery, sewer capacity, agricultural lands, oak woodlands, historic resources, noise, air quality, and wildlife habitat. The plan is expected to make the County worse in 25 different ways. The good news is that you still have time to amend your plan to grasp the opportunity to make Calaveras County a better place.

- About 2500 working-age people in Calaveras County do not have a high school diploma or GED. Is it any wonder why they are having a hard time finding a job? The State of California has money for County library literacy programs to help these men and women to get their GED, and to start to build a pattern of success in their lives. Let's get that money, and use it to build a smarter and more productive workforce.

- Calaveras County's per-capita retail sales revenue is half the California average. The Small Business Administration has technical assistance and low-interest loans to start or expand a small business, and to recover a business damaged in a natural disaster. Let's get that money, and help our businesses thrive.

- The California Department of Housing and Community Development not only has funds to help seniors maintain their homes, it also has funds to help us produce housing affordable to working singles and working families. Let's get that money, so that those who collect their pay checks here, can also live here, spend their money here, and pay their sales tax here.

-The California Department of Water Resources again has state bond funds available for disadvantaged communities to maintain and to improve water and sewer infrastructure. Let's get that money so that our communities have the infrastructure to survive and to grow, without such ^{Large} ~~high~~ rate increases.

-The State of California has grant programs to help us adapt our transportation system to address climate change. Let's get that money and be prepared for a future with cleaner vehicles and greater evacuation needs.

- The State just passed a \$3 billion park bond. Let's get that money to make Calaveras County an even better place for people to come to recreate.

-The State of California has a program to fund habitat acquisition so that vulnerable wildlife populations will survive climate change. Let's get that money so that we can have both economic development and viable ecosystems.

- The USDA has over 30 programs providing loans, grants and technical assistance to rural communities to improve their economic viability, and thereby maintain their agricultural and forest lands in future production. Let's get that money, so farms and ranches can thrive.

If you put these actions into your plan, then we won't have 25 significant impacts from your plan. If you put these actions into your plan, together we will build a future you will be proud to have as your legacy.

The glass has been half full in Calaveras County for too long. The economic glass is only half full. Its time to fill the glass. The public safety glass is only half full. Its time to full the glass. The education glass is only half full. Its time to fill the glass. The environmental glass is only half full. Its time to fill the glass.

Thank you, good night, and God bless.